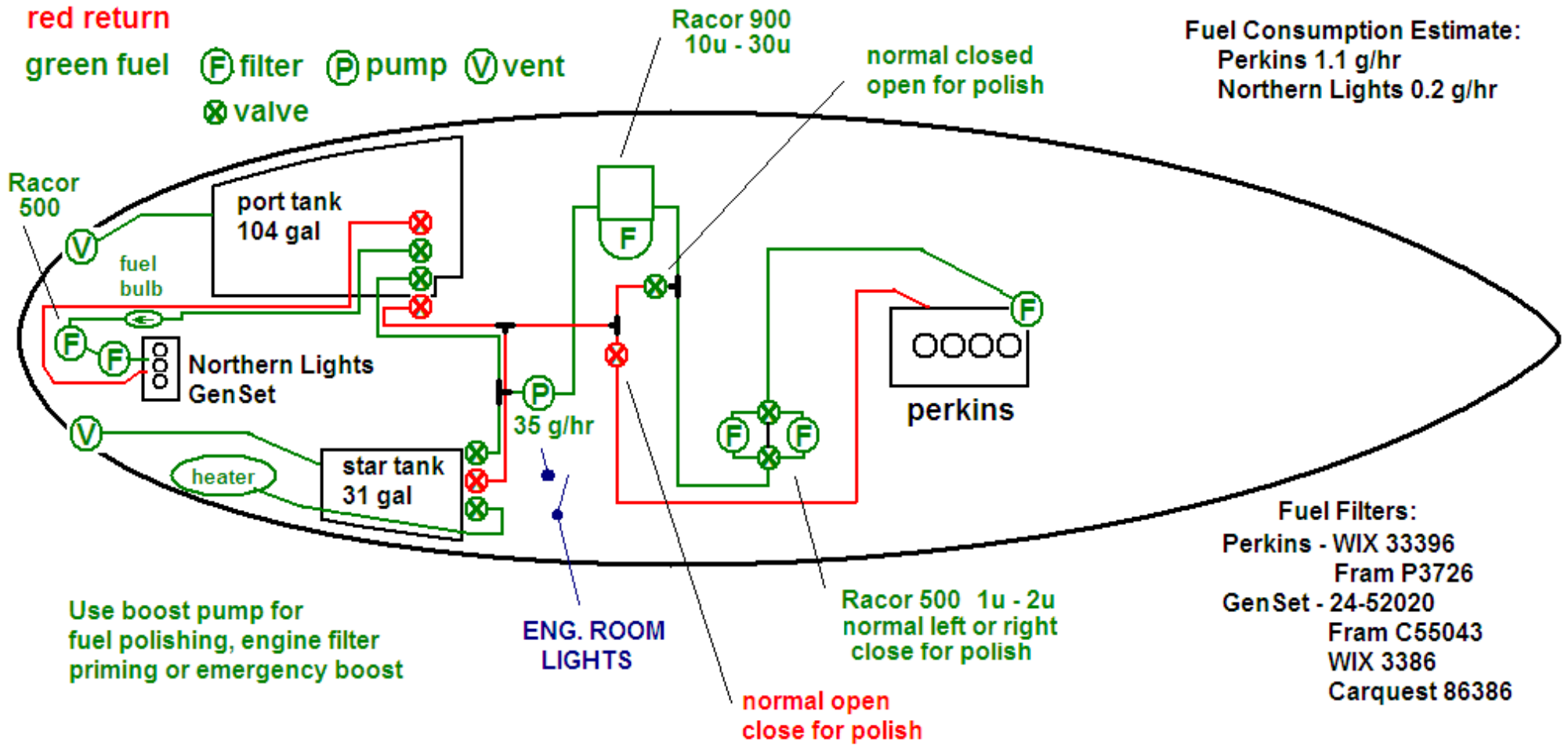


Tenacious Fuel Flow and Fuel Polish Schematic

red return

green fuel (F) filter (P) pump (V) vent
 (X) valve

Fuel Consumption Estimate:
 Perkins 1.1 g/hr
 Northern Lights 0.2 g/hr



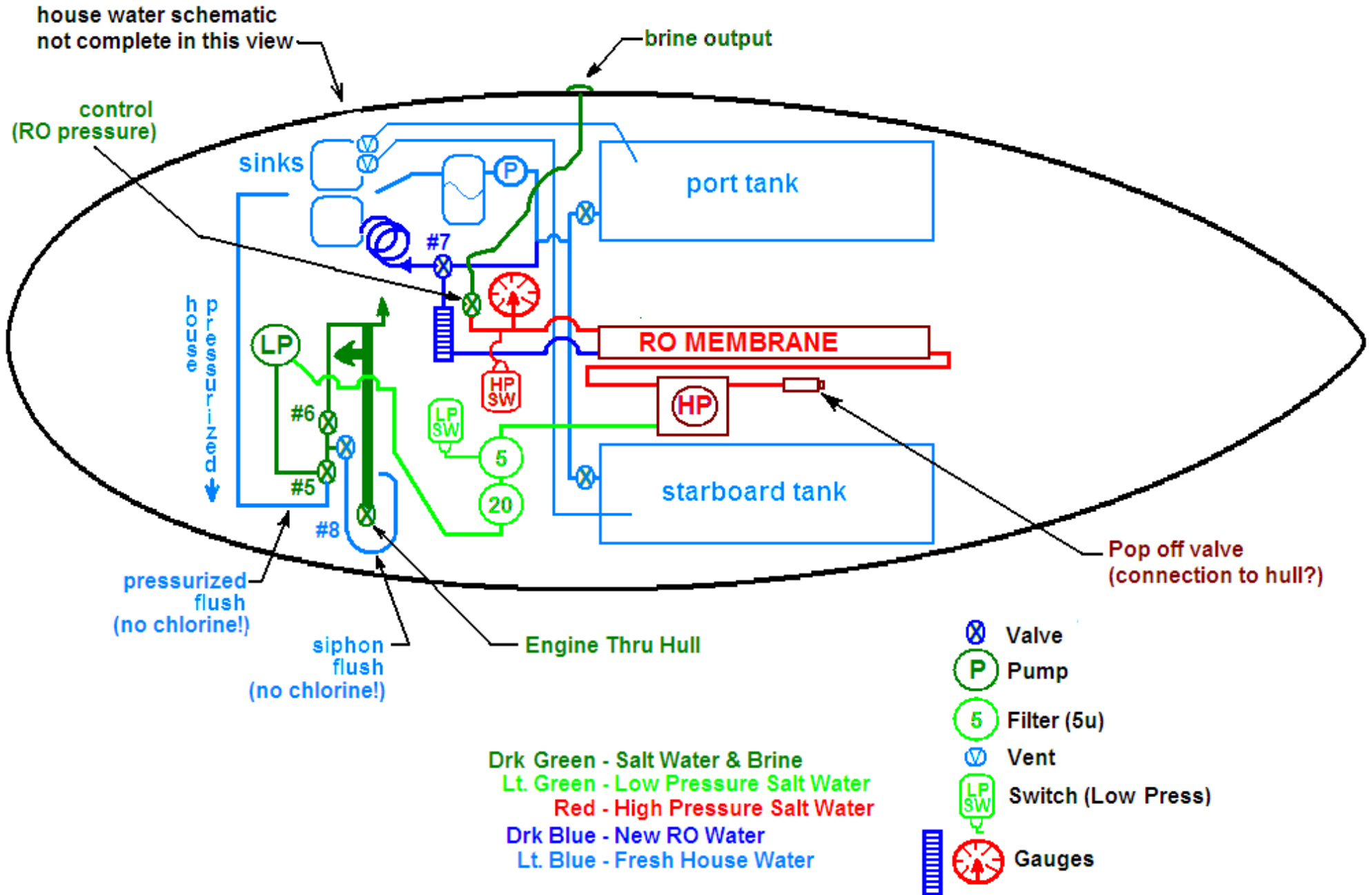
Polish (recirculation through Racor 900 only) is plumbed to operate when diesel engine is off. Racor 900 operates as prefilter for Dual Racor 500's during normal engine operation. GenSet fuel line does not go through Racor 900 as a pre-filter, but polisher can be run while GenSet is operating.

Fuel Polish can recirculate within one tank, or pump from one tank to the other. Select fuel valve and return valve combination as required. To avoid damage to Engine or fuel spillage check valve position very carefully before operating either engine or polisher.

The owners Manual specifies that Tenacious carries 125 gallons diesel. By pumping the tanks empty with the fuel polisher you can easily measure the tank volume. The capacity on the schematic (135 gal) is based upon filling the tanks from an empty condition 1 time each in Mexico. In other words, 135 capacity needs additional verification.

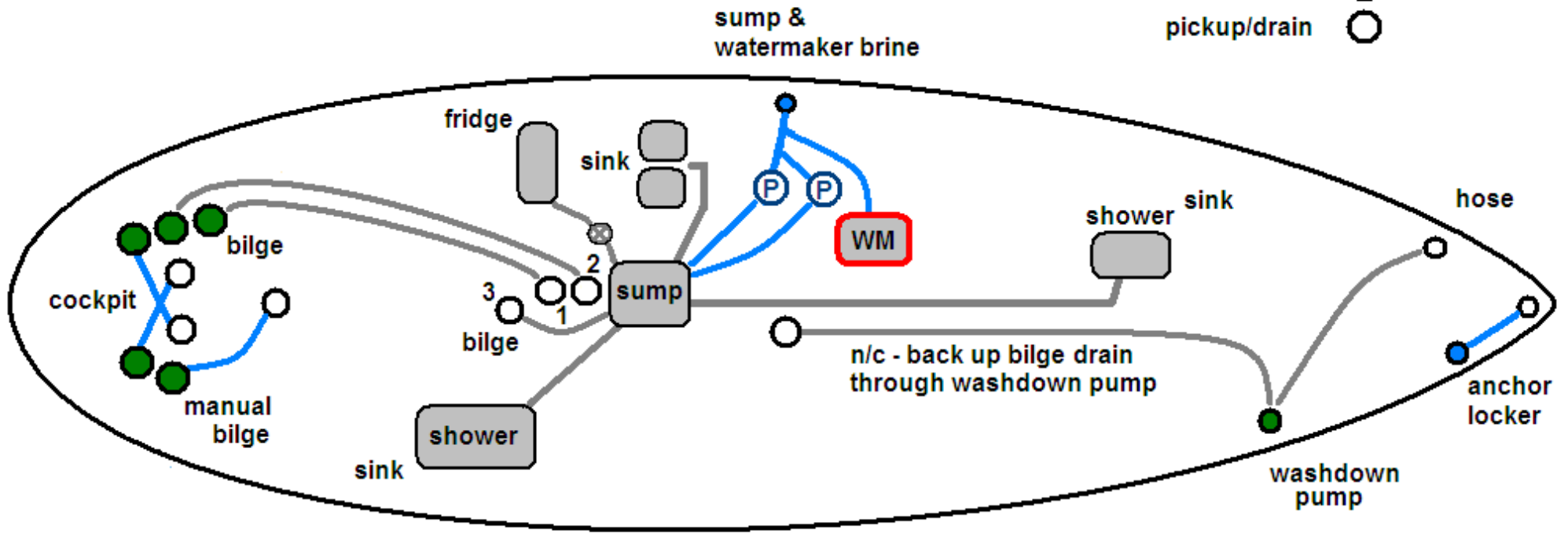
Tenacious Water Maker Schematic

See also Aqua Marine Schematic

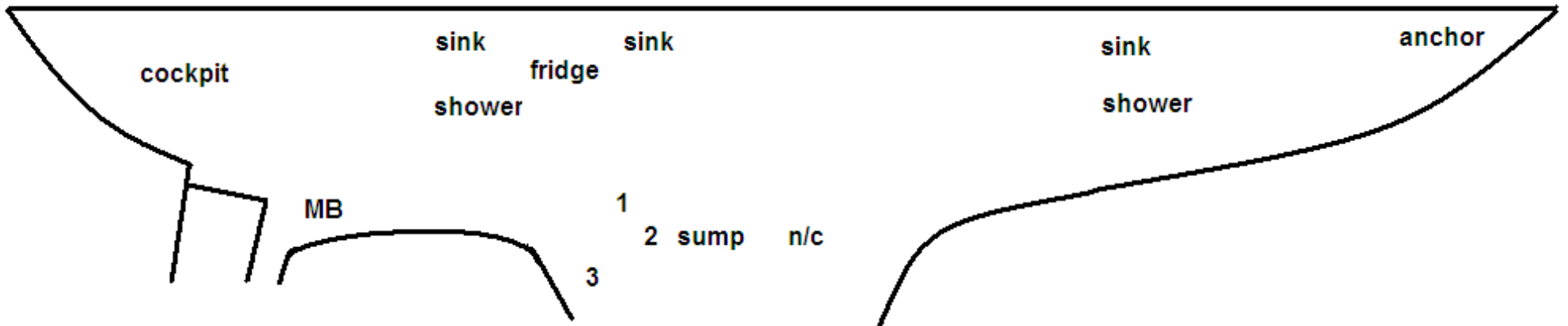


Tenacious Sump & Bilge plumbing

- Below Waterline ●
- At Waterline ●
- pickup/drain ○







Elevations

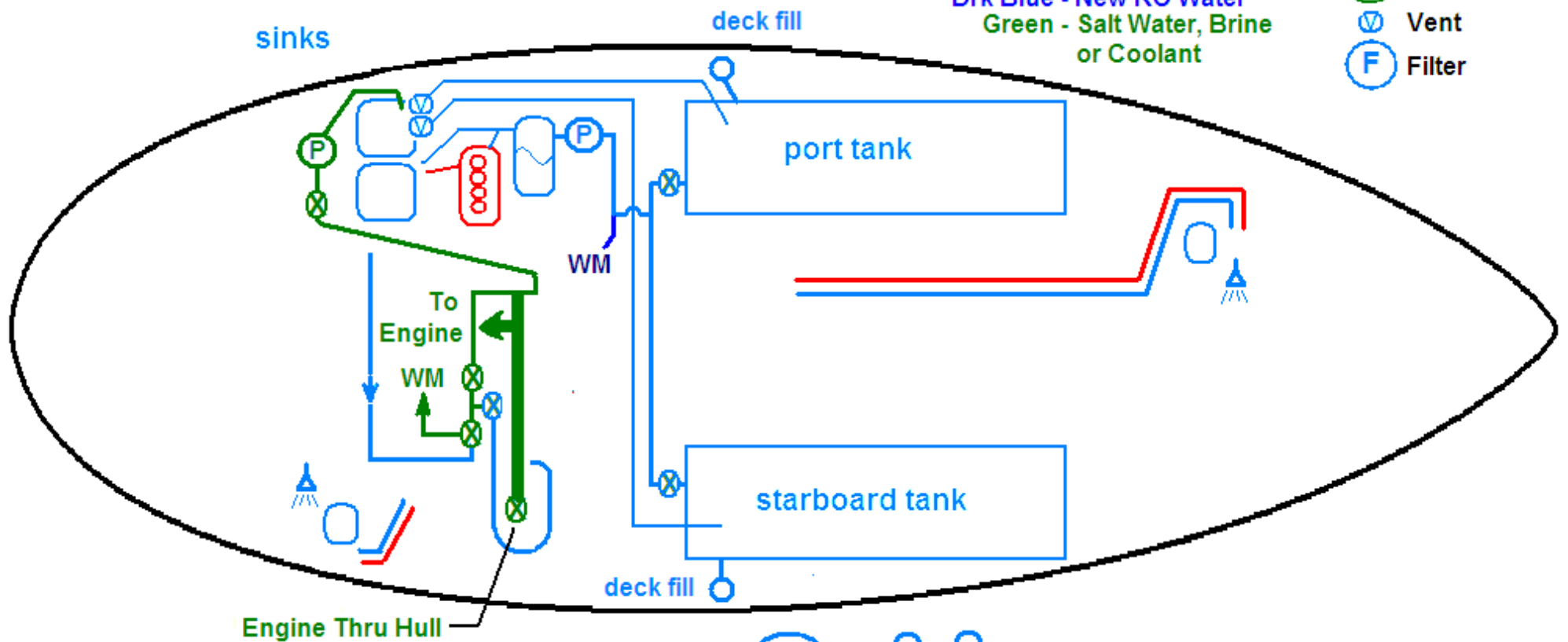


Tenacious Fresh & Salt Water Schematic

(Water Maker not shown in detail)

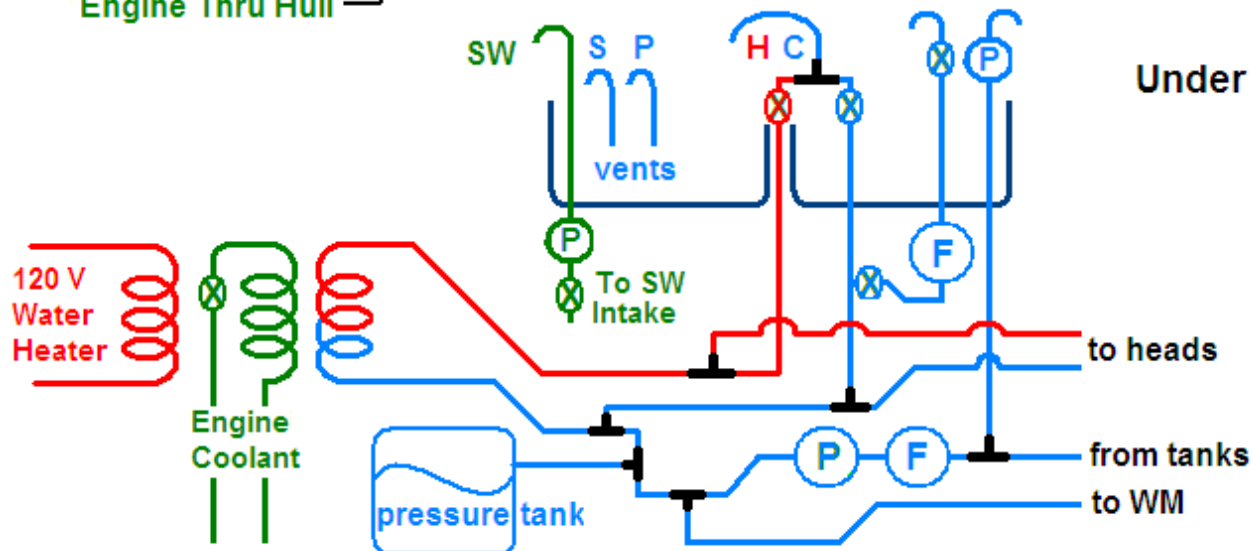
Lt. Blue - Fresh House Water
 Red - Hot Water
 Drk Blue - New RO Water
 Green - Salt Water, Brine or Coolant

-  Valve
-  Pump
-  Vent
-  Filter

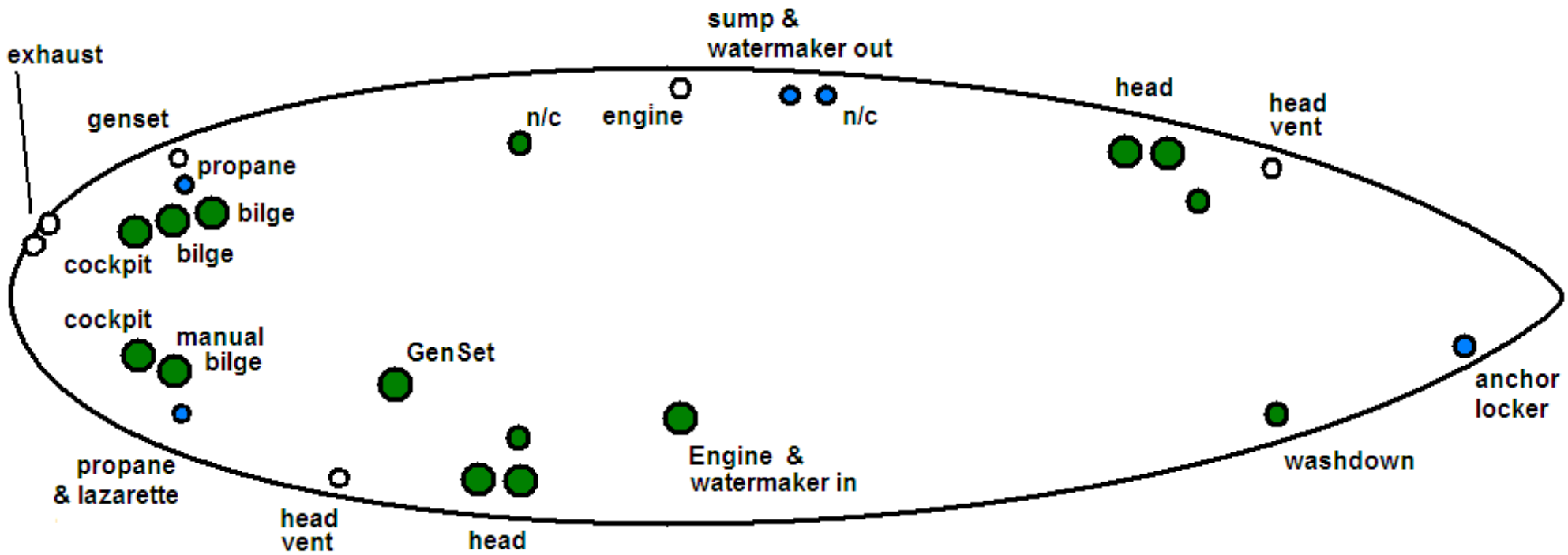


Engine Thru Hull

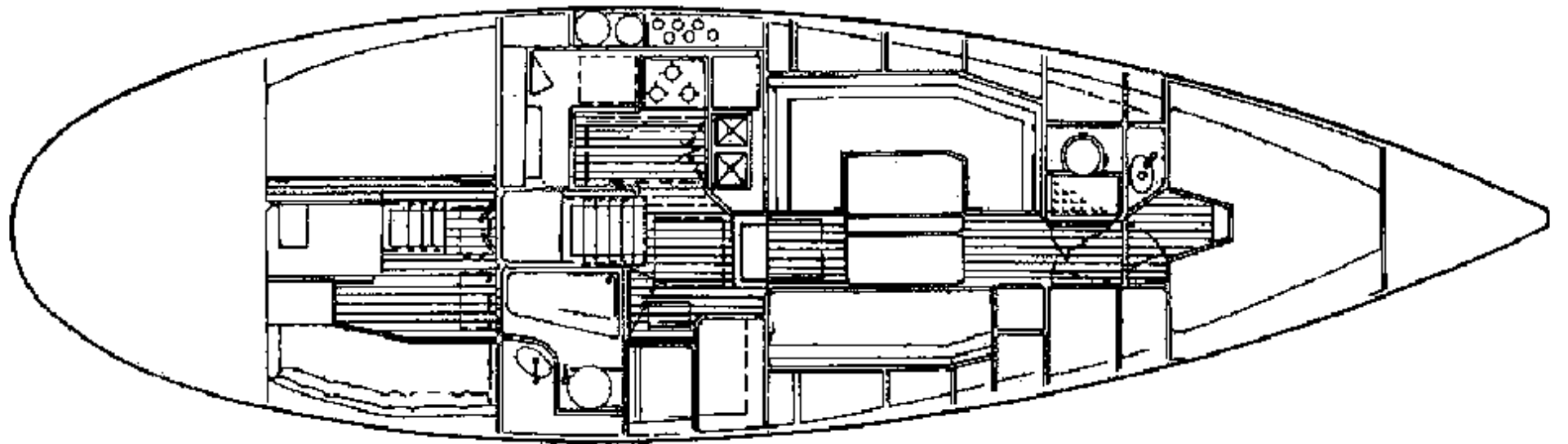
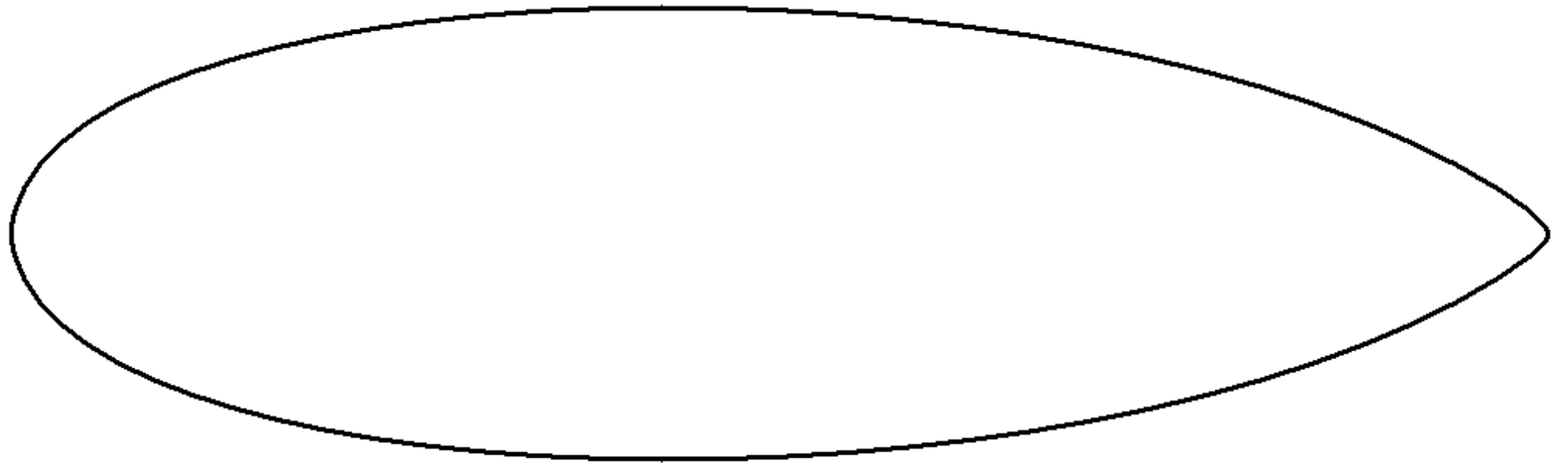
Under Sink Plumbing



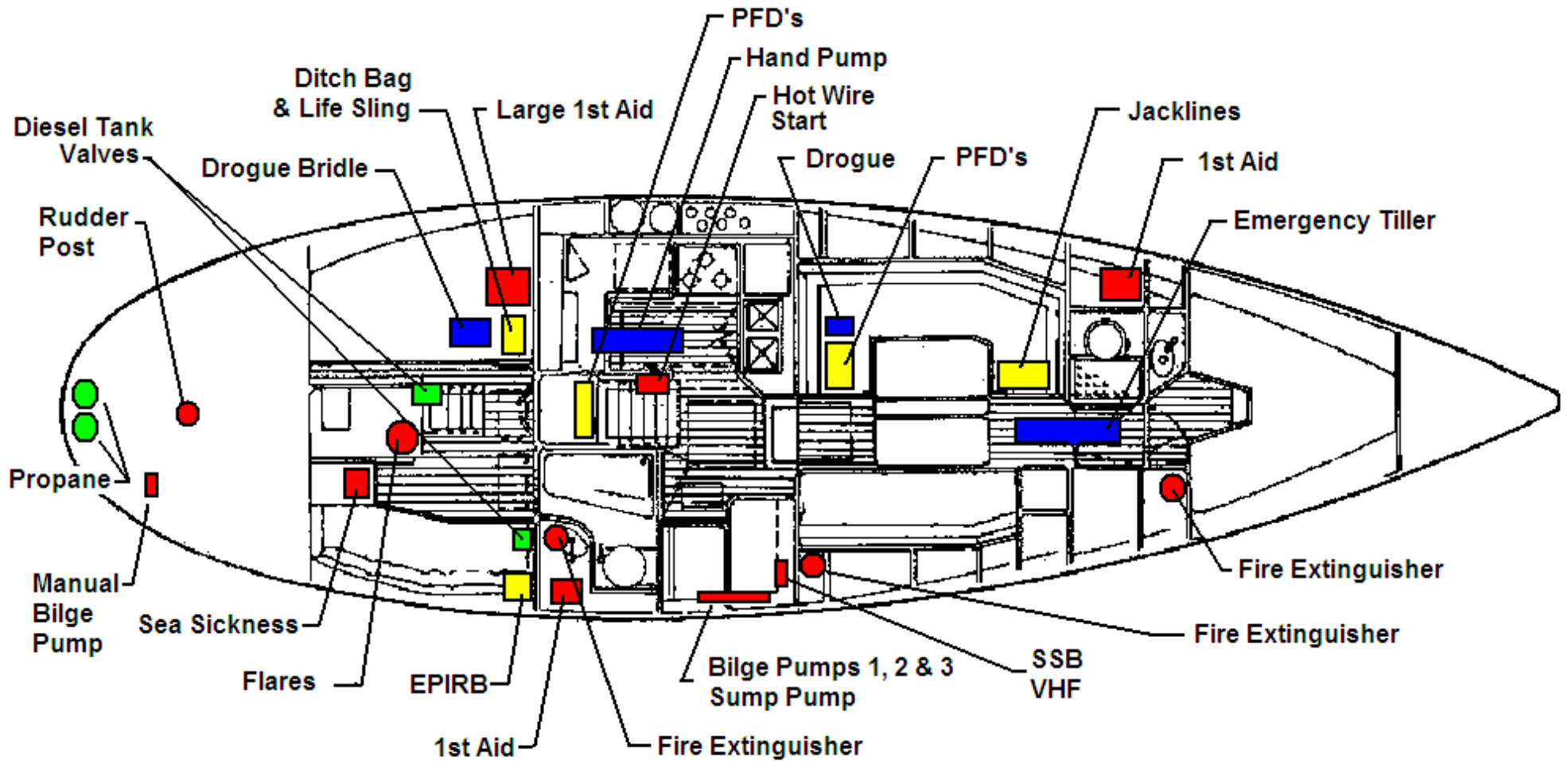
Tenacious Through Hull Fittings



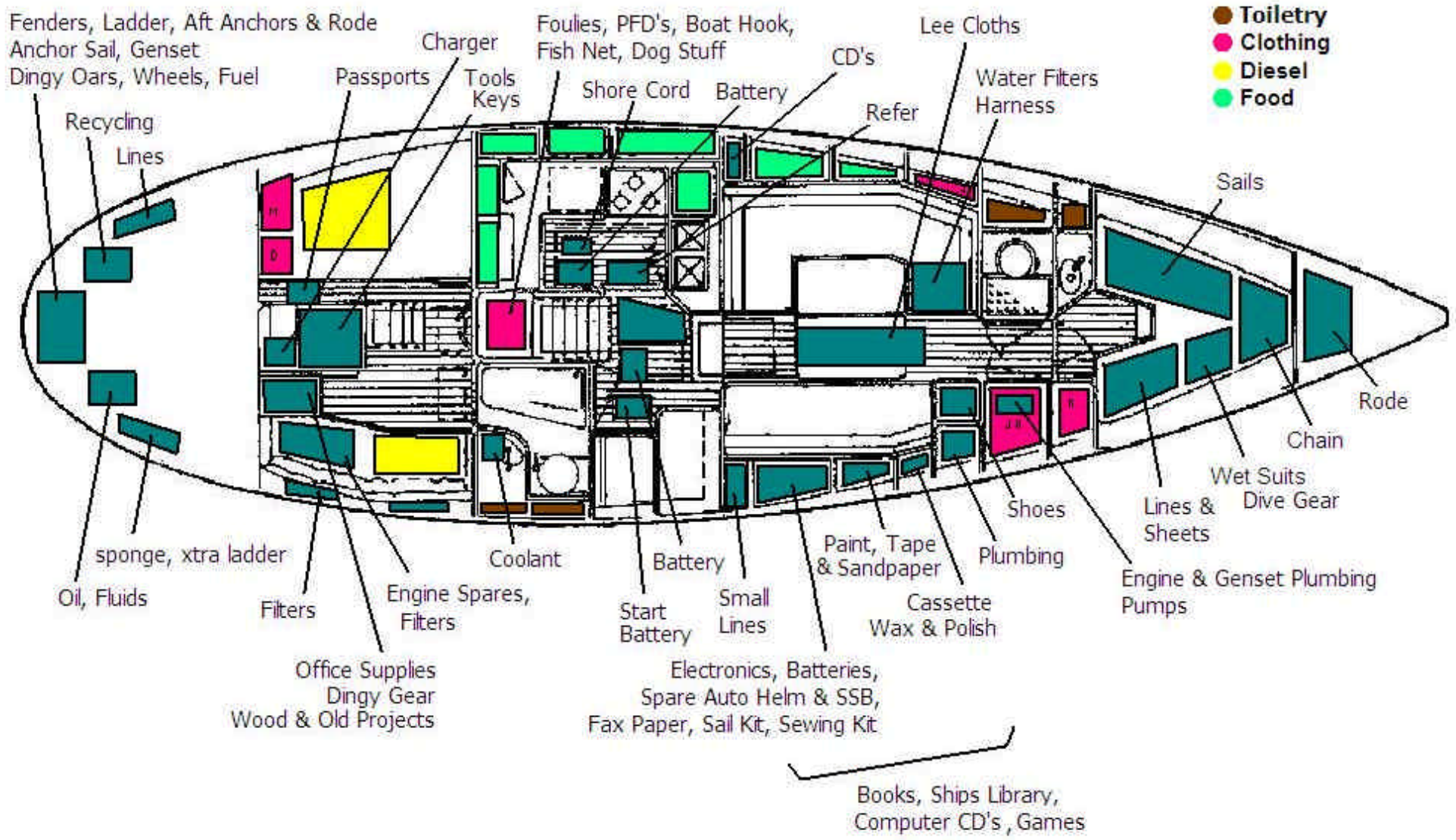
- Below Waterline ●
- At Waterline ●
- Above Waterline ○

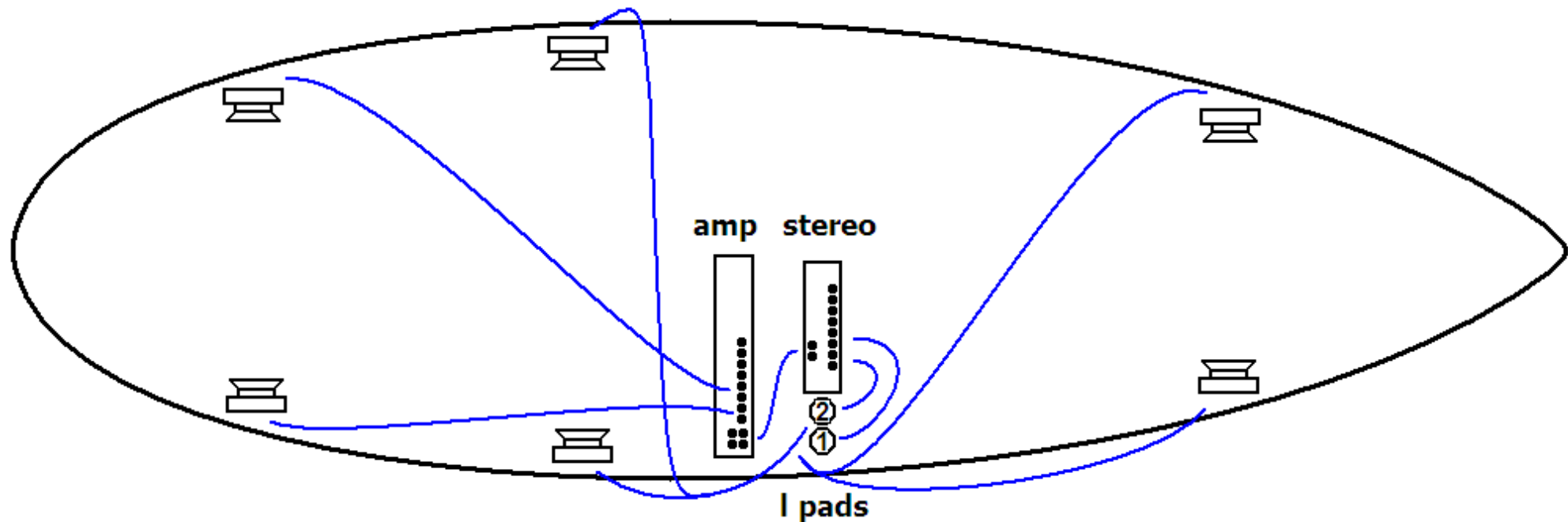


Tenacious Emergency & Safety Equipment



Tenacious General Storage





line out

stereo

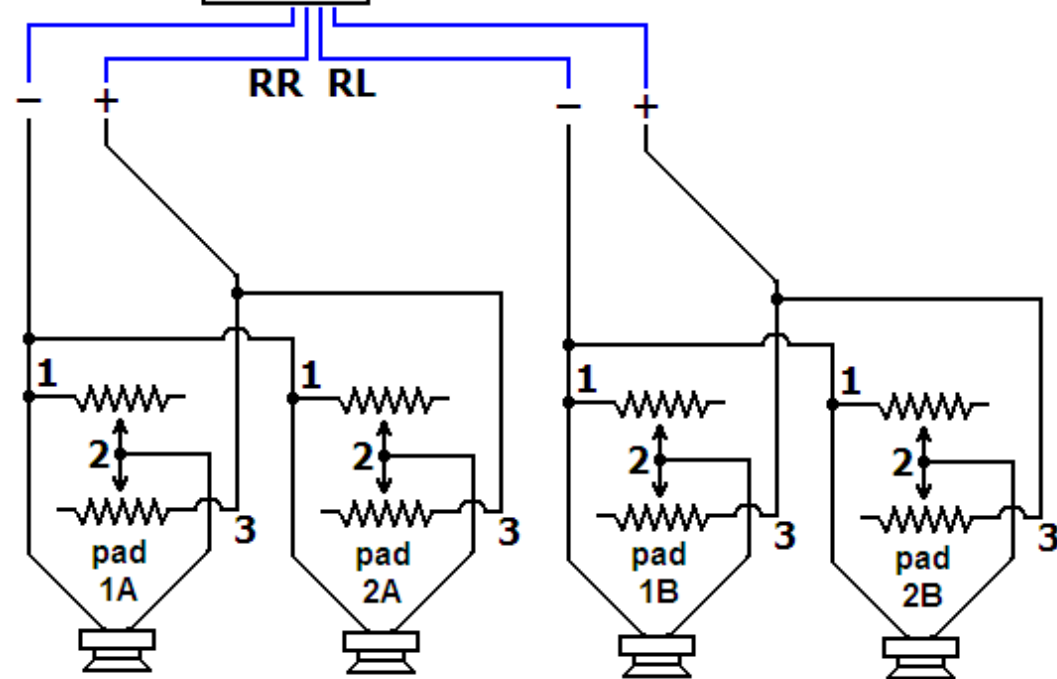
Volume - All

Stereo Fader - Cockpit or Cabins

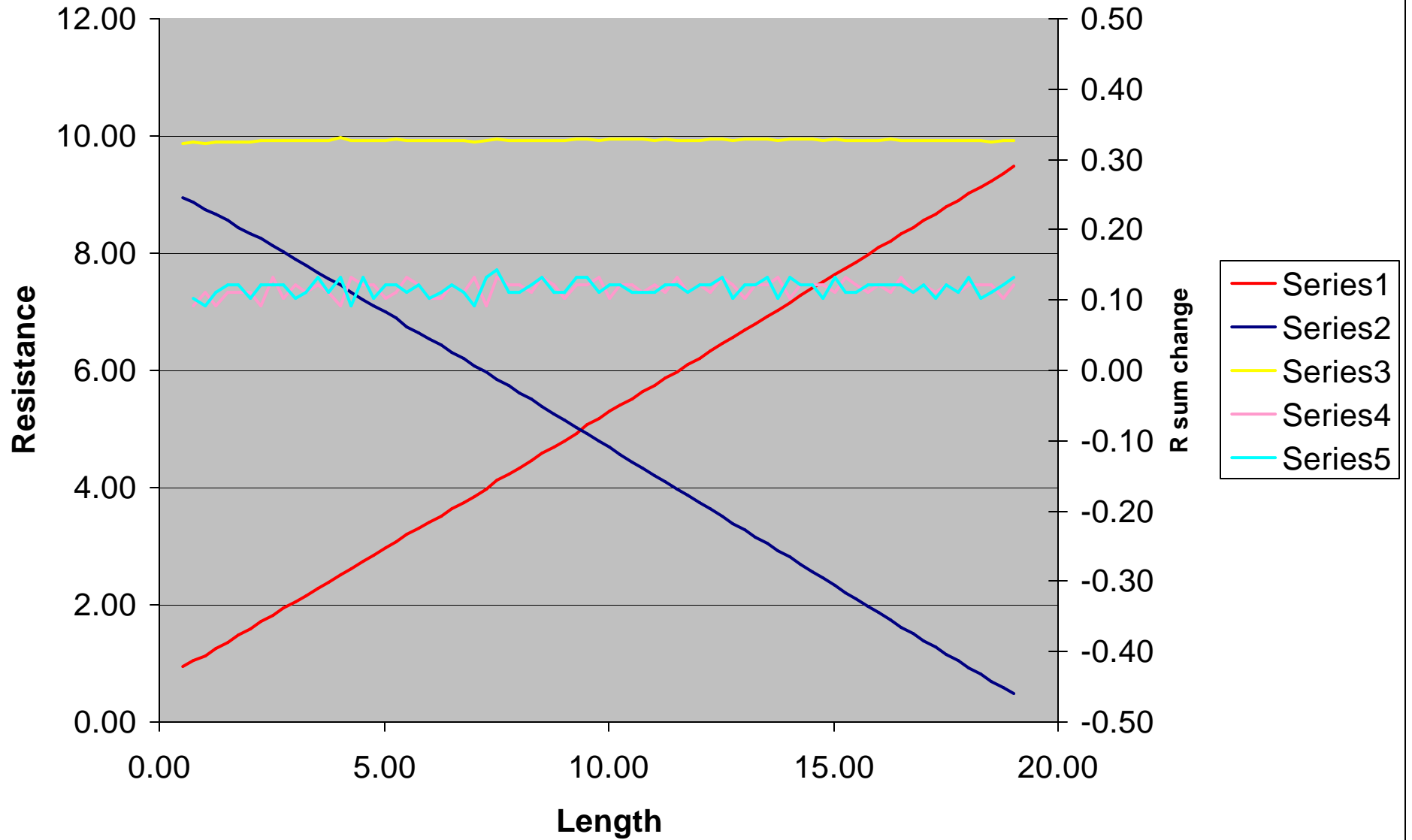
External Volume 1 - Forward Cabin

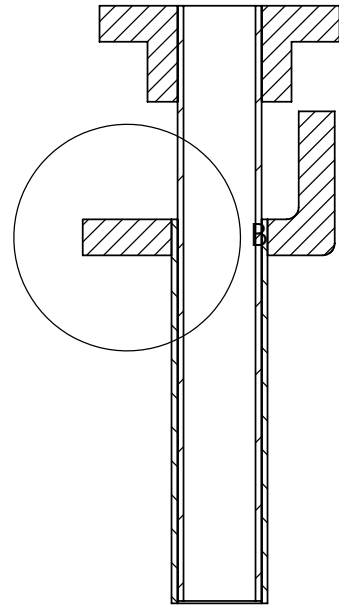
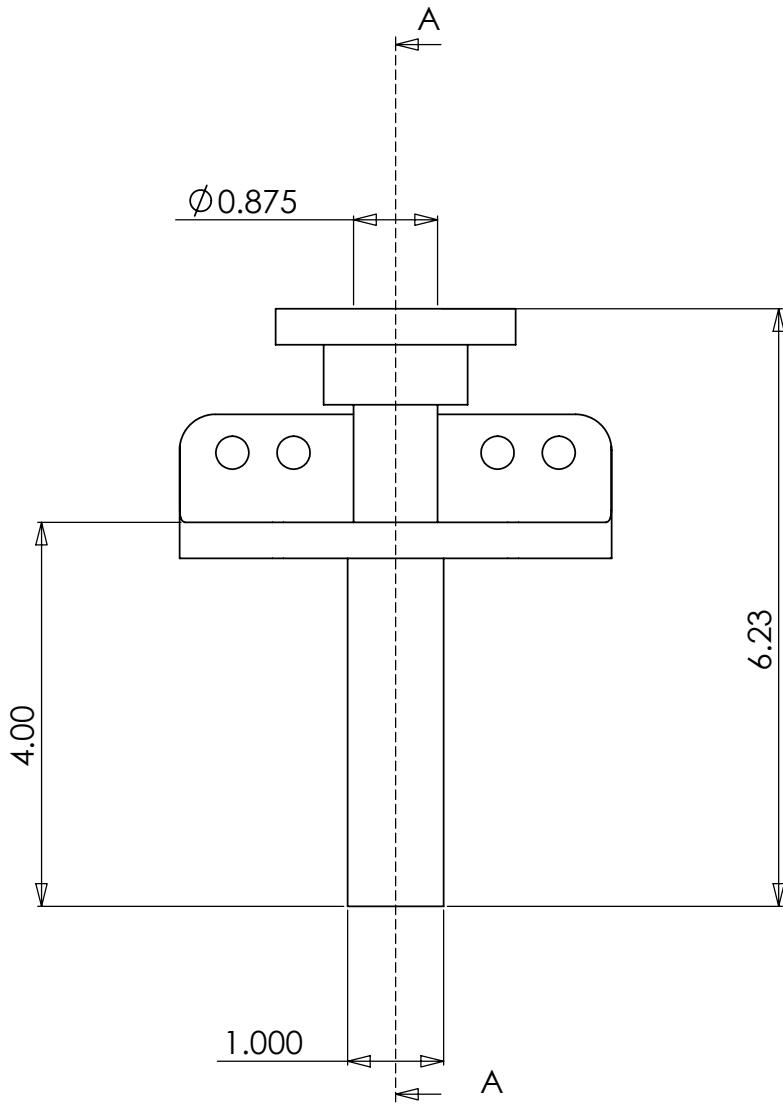
External Volume 2 - Aft Cabin

8 ohm "L Pad"

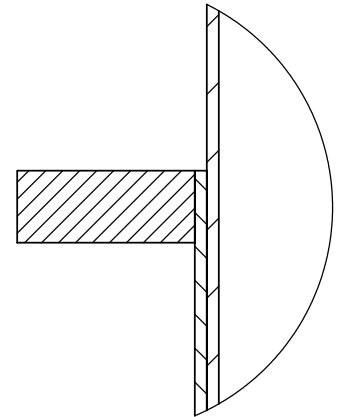
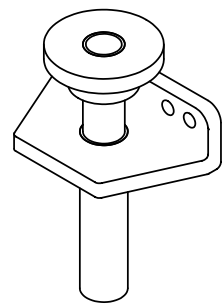


AutoPilot Arm 21JUL06





SECTION A-A



DETAIL B
SCALE 2 : 1

RELEASED

none	N/A	PROTOTYPE	03APR06	A
REV	EC No.	DESCRIPTION	DATE	APPROVED
REVISION				

UNLESS OTHERWISE SPECIFIED
DIMENSIONS ARE IN: INCHES
REFER TO ASME Y14.5M-1994
FOR DRAWING INTERPRETATION

UNTOLERANCED DIMENSIONS			MATERIAL	
OVER	TO	TOLERANCE	300 SERIES SST	
0.5	3	± 0.1	FINISH	
3	6	± 0.1	NONE	
6	30	± 0.3	MODELED	
30	120	± 0.3	DODDS	
120	+	± 0.5	DRAWN	
DECIMALS			DODDS	
ANGLES			03APR06	
± 1/2°			CHECKED	
SURFACE			JUSTIN	
XX ± .01				
XXX ± .005				

David Dodds Mechanical Design			
TITLE			
STEERING QUADRANT STOP, TENACIOUS			
SIZE	SCALE	DRWG NO.	REV
C	1:1	bracket	none
DRWG FILENAME: bracket-none PART FILENAME: bracket-			
SHEET 1 OF 1			



'05 Ha Ha Veteran Tenacious is ready to return to Mexico and she wants YOU to take her THIS WINTER !

Tenacious is a Lafitte 44, designed by Bob Perry, fully equipped for Blue Water cruising and she is ready to go, \$169,000.

Visit Tenacious on www.masonryachts.com or call Jack at 858-208-8888 for a private showing. She is lying San Diego and awaiting your next great adventure to Mexico or Beyond.

Go To www.svtenacious.com to read of her '05 adventures



The 1st picture shows replacement of the 500 resistor. If the clock quits working, or if the high and low pressure safety systems quit working, than this resistor is probably bad. Replace it with a 47 to 680, 5W wire wound resistor (I used 10W). The system should now start normally. When this resistor is blown, the system runs, but the high and low pressure safety shut off's are disabled.



The 2nd picture shows the packing nut on the back of the control valve. If the valve drips salt water turn the nut towards the T fitting. Do not over tighten. There are Teflon seals inside this T fitting around the control shaft. Loosen control knob before tightening nut.

